



TK International  
020 7794 8700  
www.t-k.co.uk

Residential Sales  
Residential Lettings  
Property Management

Sales Office:  
9 Heath Street  
Hampstead  
London NW3 6TP  
E: sales@t-k.co.uk

Lettings Office:  
16-18 Heath Street  
Hampstead  
London NW3 6TE  
E: lettings@t-k.co.uk

tk.international  
TK International  
TK International

Est.  
1998



## West End Lane West Hampstead NW6

This charming two double bedroom, two bathroom apartment is situated on the raised ground floor of this period converted house in the heart of sought-after West Hampstead.

The apartment boasts a bright and spacious feel and has mass appeal due to being fully renovated to high standards, ideally suited to first time buyers, young families, rental investors and those downsizing from larger properties.

Spanning close to 700 sq ft, the flat offers a generously proportioned accommodation throughout, including ample space for entertaining and dining, large storage for utility cupboard for washing machine/boiler, and enjoys wonderful period features including excellent ceiling height in multiple rooms, large new double glazed sash bay windows, fireplace and chandeliers.

Renovated by the current owners, the property exudes a modern and stylish ambiance, and is to be sold with the benefit of no onward chain.

The property is idyllically situated in the vibrant heart of West Hampstead, just moments away from the West Hampstead Overground Thameslink and West Hampstead Underground Station (Jubilee Line), and within walking distance of a plethora of charming bars, cafes, and restaurants.

**£699,000**

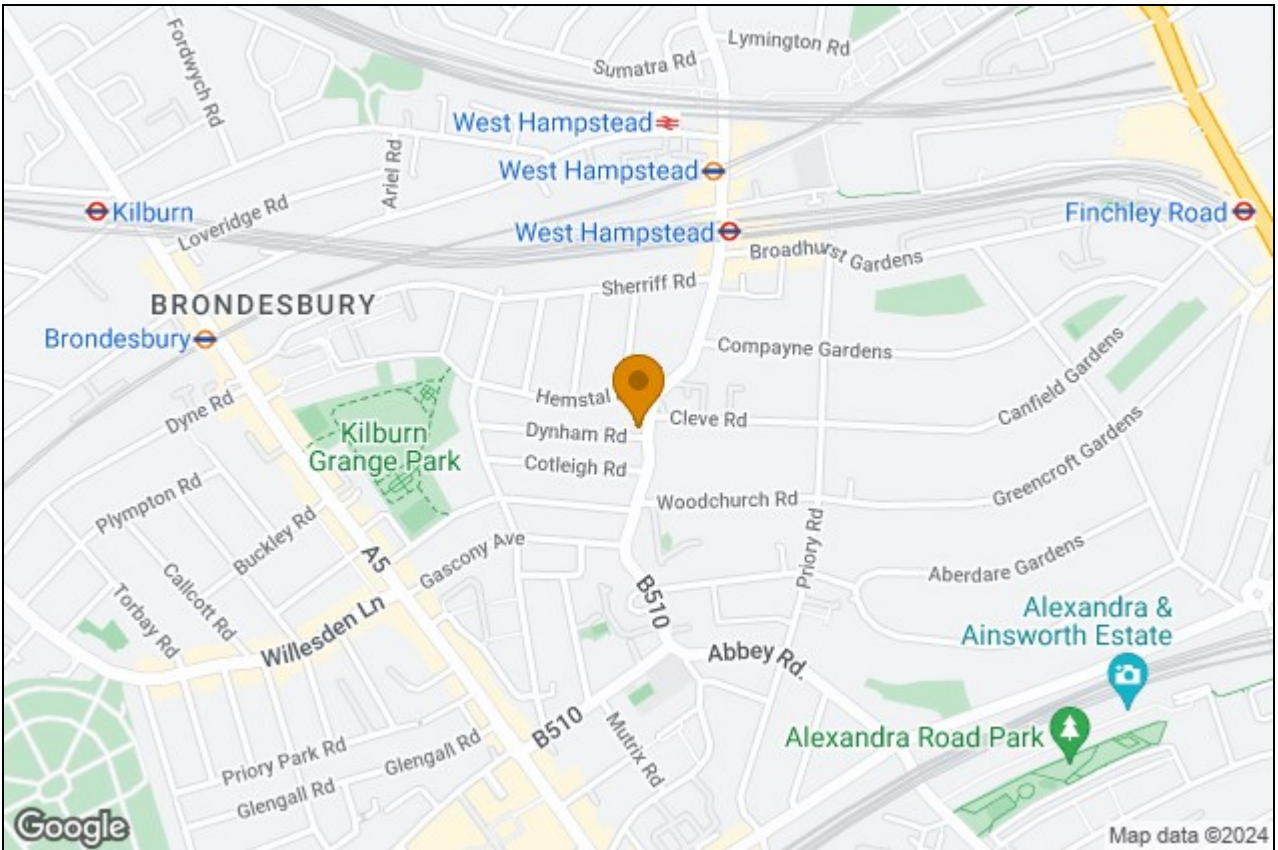
**SOLE AGENT**

**Share of Freehold**





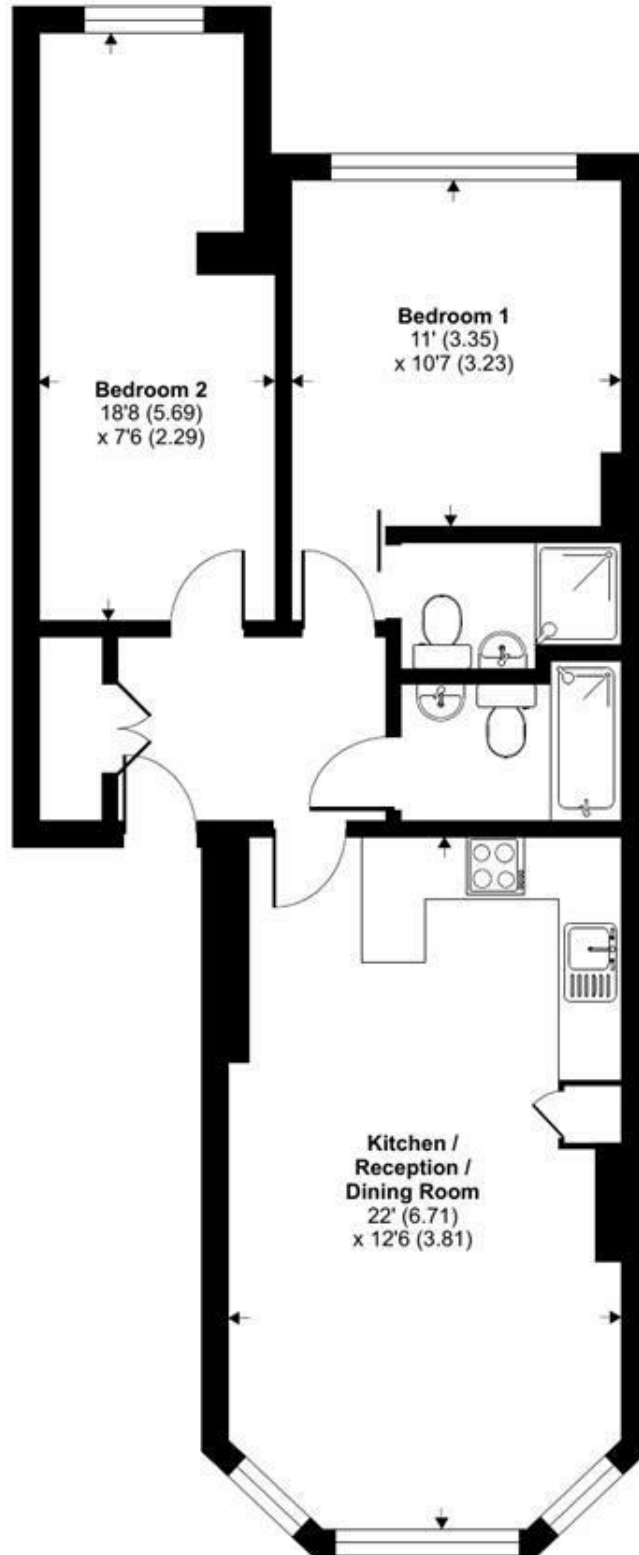




# West End Lane, London, NW6

Approximate Area = 679 sq ft / 63 sq m

For identification only - Not to scale



**GROUND FLOOR**



Floor plan produced in accordance with RICS Property Measurement Standards incorporating International Property Measurement Standards (IPMS2 Residential). © nichecom 2022. Produced for TK (Lettings) Ltd. REF: 921898